





SCENIC SPLENDOR ESTATE Executive Ranch

- Total of 47 Acres
- Includes a 3,896 SF - 5 Bedroom House
- Family Legacy Ranch
- Minutes to Capitol Reef National Park
- Not in a Subdivision and No CCR'S
- Ultimate Central Utah Location
- 5 National Parks within 180 Miles
- 3.5 Hours from Salt Lake City
- Breath Taking Views





ANCIENT HISTORICAL EXPLORATION

Prehistoric Native American art and ruins, pictographs and petroglyphs

YEAR ROUND HIKING

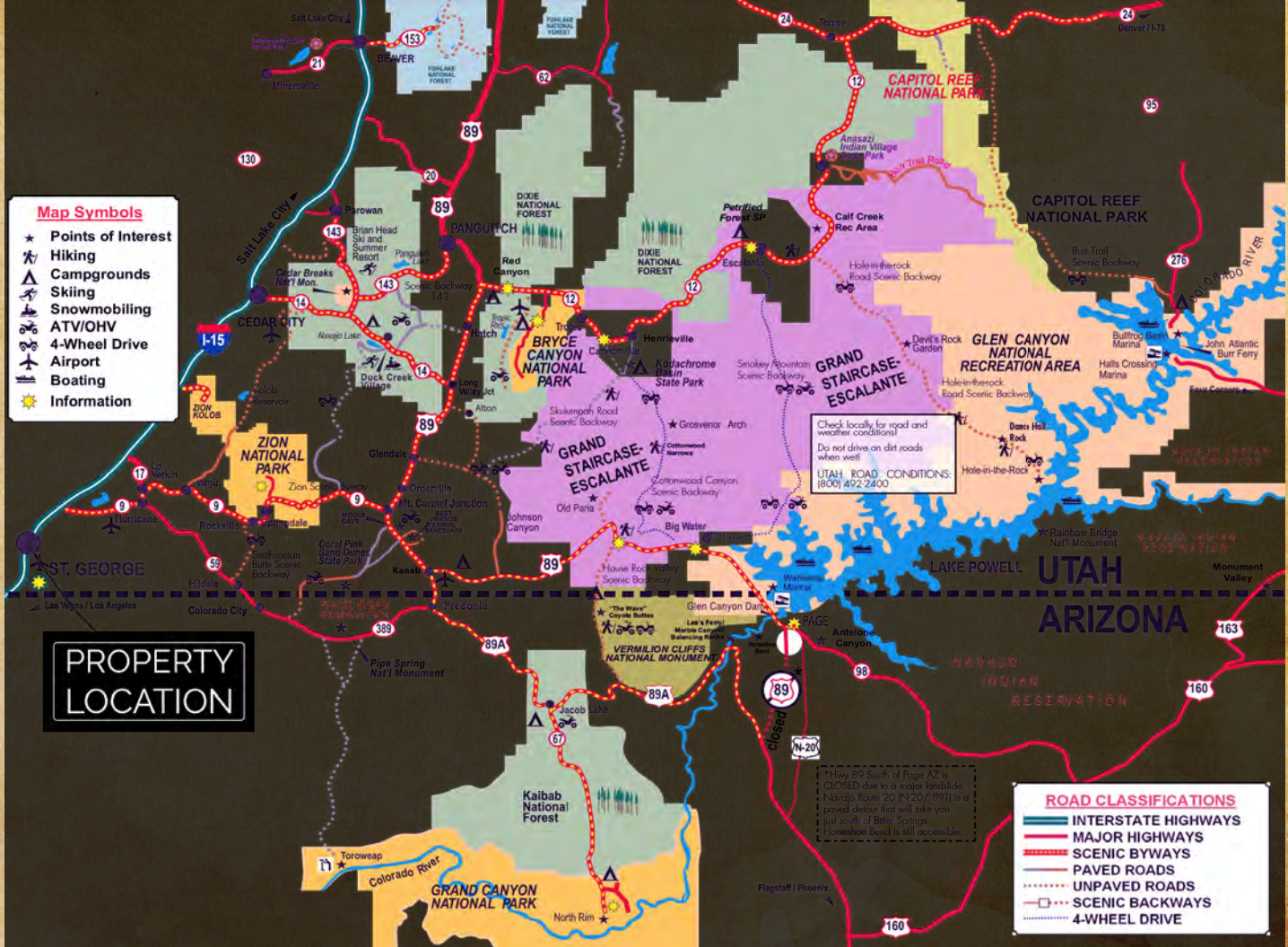
Mountains or Scenic Desert Rims and Canyons

SURROUNDED BY ATV TRAILS

Quick Day-Trips to Extended Adventures

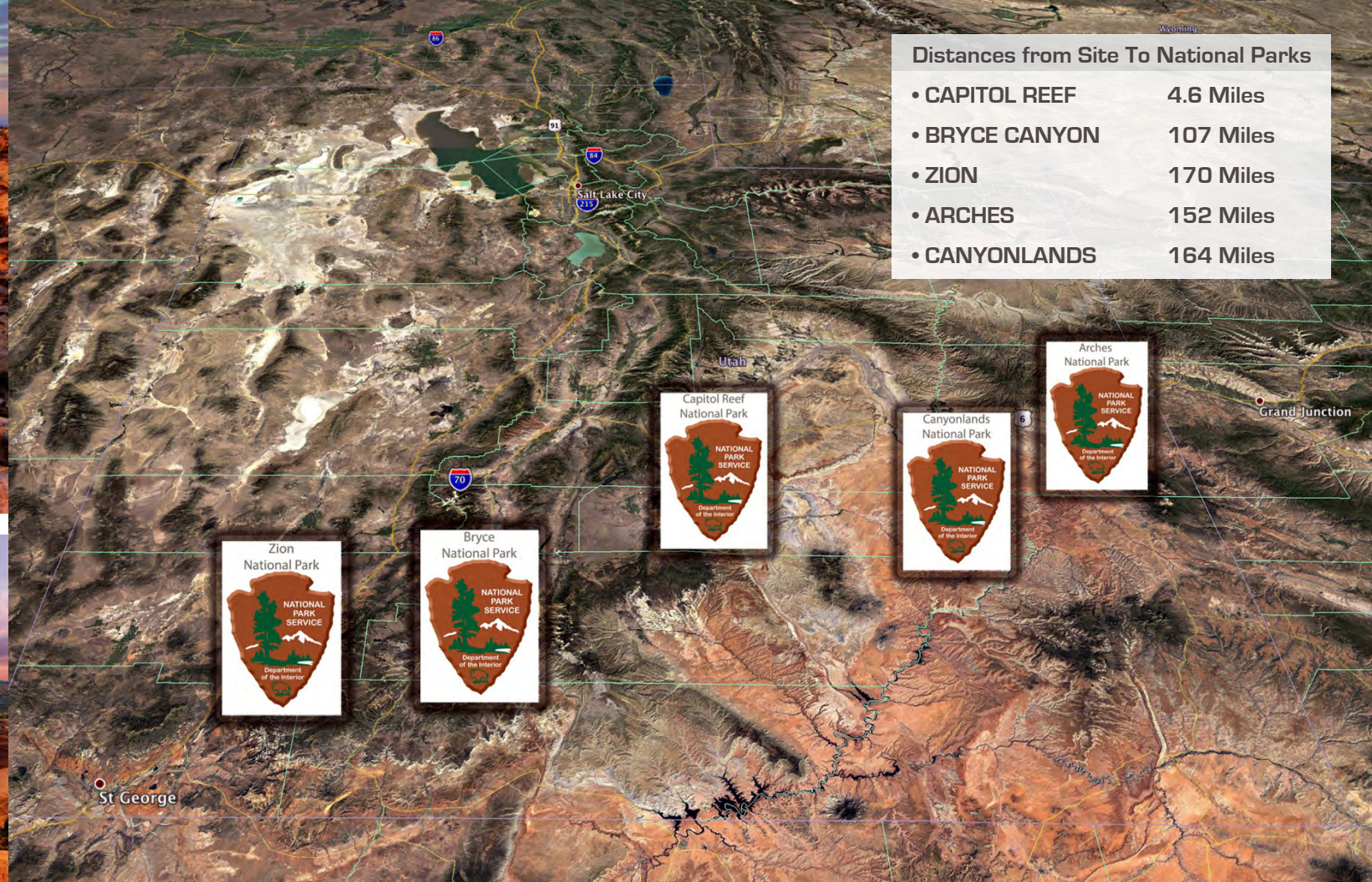
AMAZING BOATING AND WATER SPORTS

2 Hours to Bullfrog Marina – Lake Powell



ENDLESS RECREATION





STARGAZING



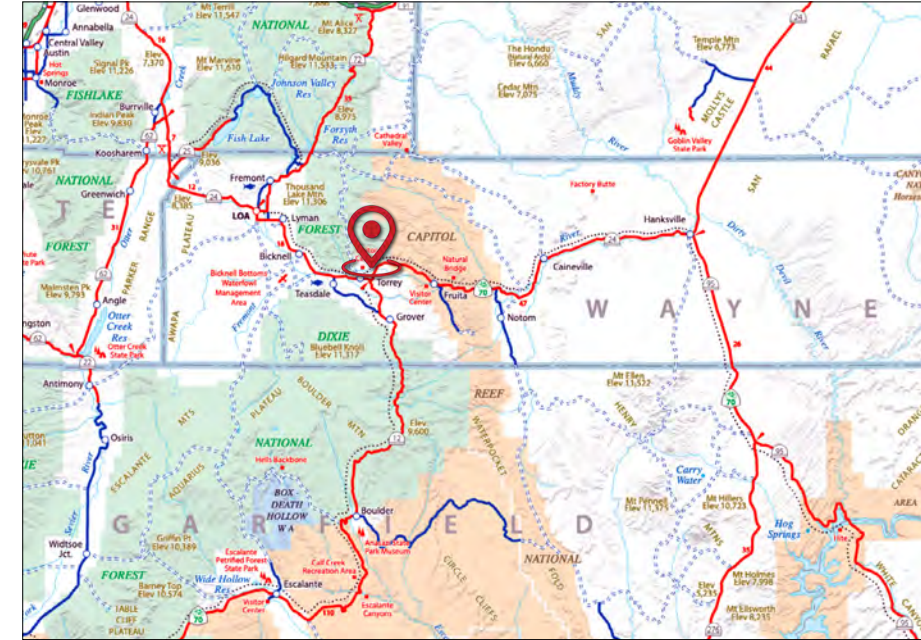
PARADISE



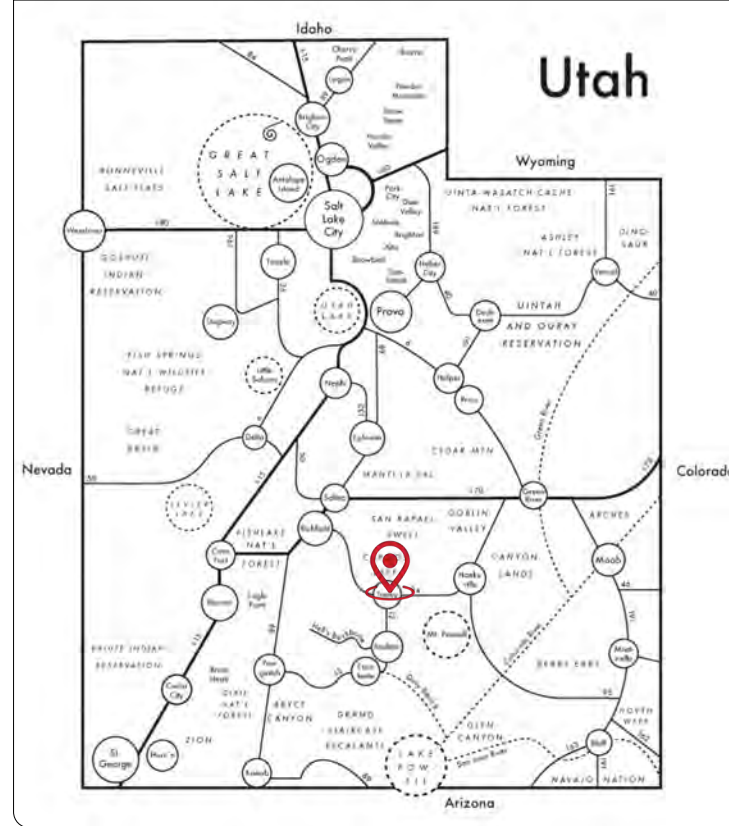
NATIVE HISTORICAL EXPLORATION



PARCEL MAP



STREET MAP



MORE DETAILS



www.scenicplendor.com

Shellee Haines

LISTING AGENT / PRINCIPLE BROKER
shellee.haines@crewre.com

435.229.2522



www.scenicssplendor.com



Co-Operative Real Estate Worldwide
COMMERCIAL • RESIDENTIAL • PROPERTY MANAGEMENT

Shellee Haines

LISTING AGENT / PRINCIPLE BROKER

shellee.haines@crewre.com

435.229.2522